



Lovelace Street, London, E8

BUTLER & STAG



A stunning 800+ sq ft 2 double bedroom apartment situated on the 3rd floor of this fabulous development "North Mill Apartments" in Haggerston, just a stone's throw from Stonebridge Gardens.

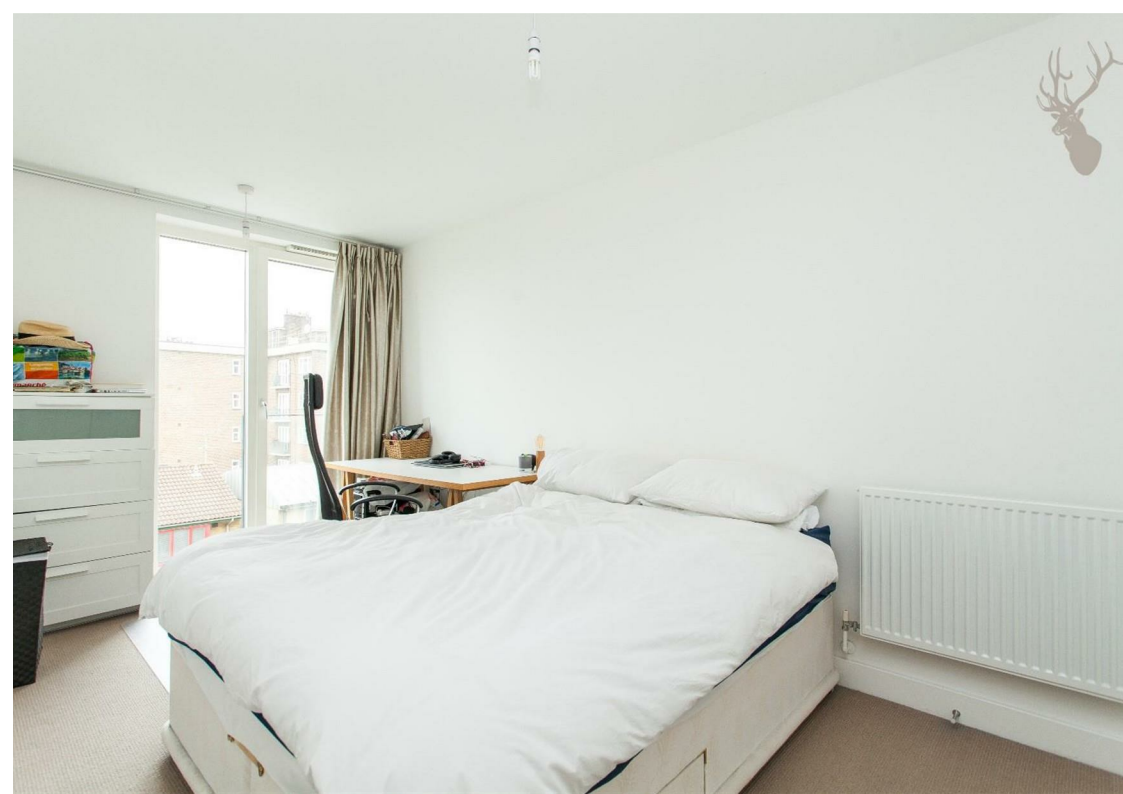


- Two Double Bedrooms
- Two Bathrooms
- 800+ sq ft
- Open Plan
- Haggerston Station

Superbly located for the popular bars and eateries that Dalston has to offer and just a few minutes' walk from both Haggerston and Dalston Junction train stations, this spacious open-plan style apartment comes fully furnished and features 2 double bedrooms, 2 stylish bathrooms (one en-suite), a sleek fitted kitchen and wooden flooring.

The apartment also benefits from the use of a very good sized balcony and a secure underground bicycle garage.

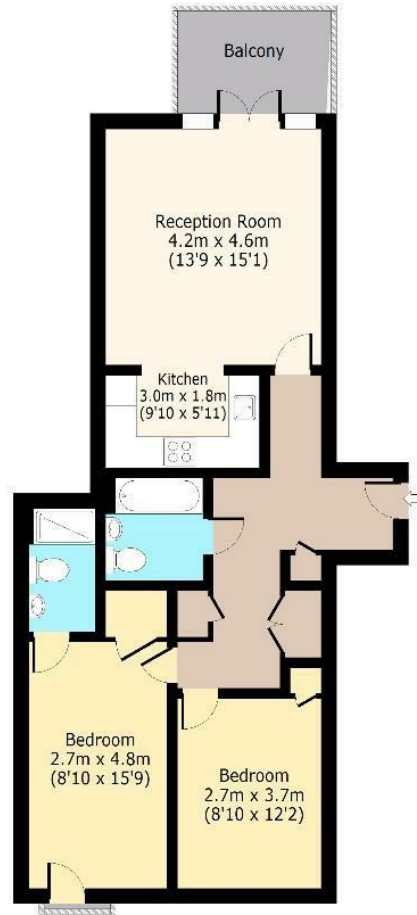




Lovlace Stret, E8

Third Floor

Approx. 74.9 Sq. meters (807 Sq. feet)



Total area: approx. 74.9 Sq. meters (807 Sq. feet)
For illustration purposes only - not to scale
www.jpaplus.com

IMPORTANT NOTICE - These particulars have been prepared in good faith and they are not intended to constitute part of an offer or contract. We have not performed a structural survey on this property and the services, appliances and specific fittings have not been tested. All photographs, measurements, floor plans and distances referred to are given as a guide and should not be relied upon.

BUTLER & STAG

☎ 020 8102 1236

🏠 508 Roman Road, Bow, London, E3 5LU

✉ bow@butlerandstag.com

www.butlerandstag.uk